

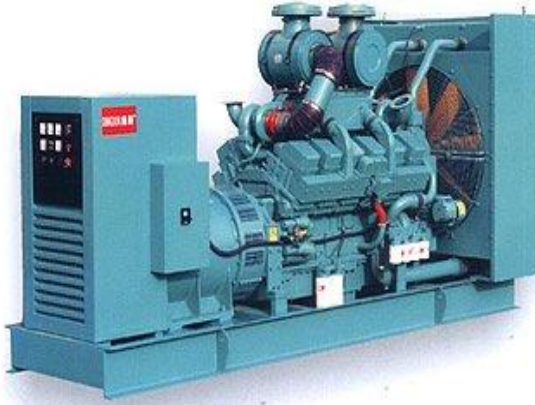
NEW/USED POWER PLANT, MARINE ENGINE & GENERATOR (NEW/USED POWER PLAN, NEW DIESEL GENERATOR, NEW MARINE ENGINE & MARINE GENERATOR)

New/Used Generator

Fuel: Gas, HFO, Diesel

Frequency: 50Hz or 60Hz

Capacity: 100Kw to 5000Kw.



Low Noise Diesel Generator (100KVA~2000KVA)



Soundproof Canopy Diesel Generator (100Kw~2000KVA)

Marine Engine and Marine Diesel Generator for Power Supply 50KW to 1000KW, 50Hz & 60Hz, 230V/400V, Diesel Drive



50Kw~880Kw Marine Generator



50Kw~250KW Marine Diesel Generator



1000KW Marine Diesel Engine & Generator.

Providing excellent service:

World Famous Brand Diesel Marine engine, AVL technology, Main proportion or generator for power supply

Engine rated power: 1250KVA/1000KW/1350HP

Engine standby power: 1375KVA/1100KW/1486HP

Alternator: World Brand AC alternator

Intake: turbocharged intercooler,

Speed governor: Electrical

Starting: 24V DC starter motor

Speed: 1500RPM

Heat radiator: K1600

Providing excellent service:

- 1) Detailed technical parameters of products in the pre-sales to help customers' design and equipment selection
- 2) Our professionals provide you with the most appropriate design and optimization
- 3) To provide technical guidance and lifetime maintenance
- 4) Sophisticated workers provide 18 months warranty on the spare parts free provided technical support in machine life.

Note: Please Contact for Specification and any Capacity of Generators, Marine Engine and Marine Generator.

NEW/USED ELECTRICAL POWER PLANT

Gas Turbine, Steam Turbine, Combined Cycle Power Plant and Used Gas Engine Power Plant.



Used Power Plant

(Gas Turbine, Steam Turbine, Simple Cycle, Combined Cycle Power Plant and Used Gas Engine Japanese Origin Power Plant.)

Frequency: 50Hz or 60Hz.

Fuel: HFO & Gas, Natural Gas & LDO, Diesel & Gas Etc.

Capacity: 5.6MW to 150MW.

Remarks: Please Contact for any Capacity of New/Used Power Plant.

We have 5MW to 125MW several Power Plants for sale with good running Condition.

For more information, please contact us by E-mail: shima-jp@shimagroup.com

Please Contact:

SHIMA CORPORATION (STC, JAPAN)

2-36-6-208 MINAMI YAMATA,

TSUZUKI-KU, YOKOHAMA, JAPAN

Tel: 81-45-595-3477 Fax: 81-45-595-3476

Cell: 81-80-3759-4348 E-mail: shima-jp@shimagroup.com