

**PRIME/SECONDARY STEEL COILS AND SHEETS
(HR, CR, GI, EG, HDG, PPGI, ETP, CRGO AND SS COIL & SHEETS)**

HOT ROLLED COILS / PLATE



Hot Rolled Coil



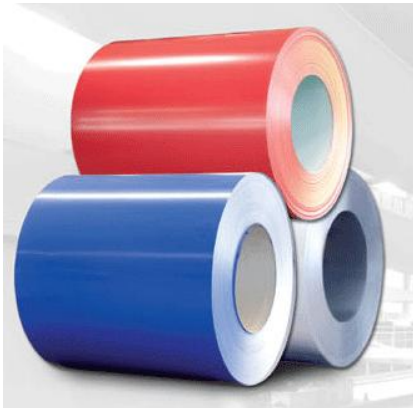
Hot Rolled Plate



Hot Rolled Coil

Product Name:	Hot Rolled Coils and Plates
Thickness	1.5mm to 200mm
Width	1000mm to 3000mm
Length	Up to 13000mm
Weight	Up to Maximum of 30Mtons
Application	Structural, Vessel, Shipbuilding, Tank Plate

PREPAINTED GALVANIZED STEEL COIL (PPGI COIL)



PPGI Coil



PPGI Coil

Product Name:	Prepainted Galvanized Steel Coil
Zinc Coating	60-275g/m²
Grade	TSGCC
Thickness	0.15mm – 0.80mm
Width	914mm – 1250mm
Coating	Top Coat 5+ 15um, 5+20um, Back Coat 5-15um
Color	White, Grey, Blue, Green, Red Etc.
Standard	JIS G 3302

COLD ROLLED STEEL COILS/SHEETS



Cold Rolled Coil



Cold Rolled Coil

Product Name:	Cold Rolled Steel Coils/Sheets
Specification	JIS G3141, EN 10130, DIN 1623.1
Grade	SPCC, SPCD, DC01, ST12, ST13, 08AL
Thickness	0.11mm – 2.5mm
Width	914mm –1575mm
ID	508mm/610mm
Application	Steel Rims, Steel Furniture, Pipe Making etc

GI STEEL COIL/SHEETS



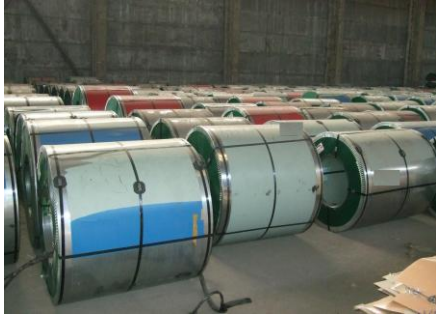
GI Coil



Prime GI Coil

Product Name:	GI Steel Coil and Sheets
Thickness	0.12mm – 1.5mm
Width	600mm – 1250mm
Standard	JIS G3302, JIS G3313 ASTMA653 Etc
Grade	SPCC, SPHC, Q195-Q345, GR.A, GR.B Etc.

ELECTRO GALVANIZED STEEL COIL (EG COIL)



Prime EG Coil



GI and EG Coil



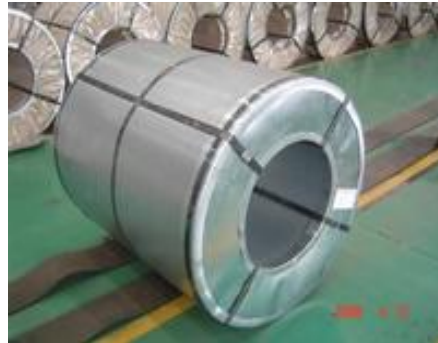
GI and EG Coil

Product Name:	Electro Galvanized Steel Coil (EG Coil)
Application	Soft Temper Commercial Quality & Deep Drawing
Grade & Spec.	JIS G3313 SECC, SECD, SECE
Thickness	0.3mm – 1.2mm
Width	914mm – 1500mm
Coating weight	10-30g/m(single side)

HOT-DIPPED GALVANIZED STEEL COIL/SHEET (HDG COIL)



HDG, GI and EG Coil



HDG, GI and Coil



GI, EG, HDG, GL Coil

Product Name:	Hot-Dipped Galvanized Steel Coil
Zinc Coating	60-275g/m²
Grade	SGCC, CS-B, DX51D
Thickness	0.15mm – 4.00mm
Width	914mm – 1500mm
Standard	JIS G3302, ASTM A653, DIN EN 10327
Mill	NSC, JFE, SMIL, KSML etc.

GALVALUME STEEL COIL/SHEET



Product Name:	Galvalume Steel Coil
Standard/Grade	JIS G3321, ASTM A792 SGLCC/SGLCH
Surface	No/regular Spangle, Skin Passed/Non Skin Passed, Anti Finger/Non Anti Finger
Internal Dia	508mm/610mm
Thickness	0.18mm – 2.00mm
Width	914mm – 1250mm
Zinc Coating	AZ50 – AZ150
Application	Construction and Home Appliance

STAINLESS STEEL COILS/SHEETS



Stainless Steel Coil



Stainless Steel Sheets



Prime Stainless Steel Coil

Product Name:	Stainless Steel Coils/Sheets
Grade	SUS430, SUS304, SUS316, SUS201 Etc
Surface	FINISH, BA, 2B, 2BB, 2D Others
Thickness	0.15mm – 2.0mm and 1mm to 20mm
Width	600mm--1240mm mill edge or slit edge



Stainless Steel Coil



Stainless Steel Coil



Stainless Steel Coil

ELECTROLYTIC TIN PLATE SHEETS (ETP)

Product Name:	Electrolytic Tinplate Sheet (ETP)
Standard/Grade	MR, SPCC JIS G3303-2002, GB/T2520-2000, EN10202
Thickness	0.15mm – 0.40mm
Width	600mm ~ 1000mm
Temper	T1 ~ T5
Surface	Bright/Stone/Silver
Application	cans for food, chemicals, aerosol, gifts, printing and other
Packaging Details	Wrapped completely with an inner cover of plastic or waterproof papers with corners protected with metal angles on wooden pallets

